

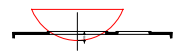
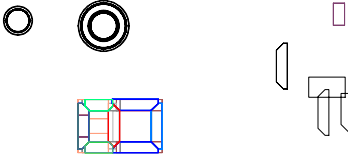
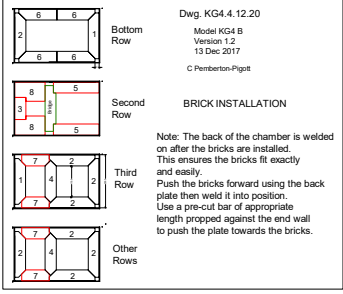
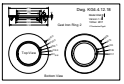
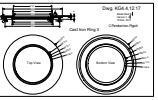
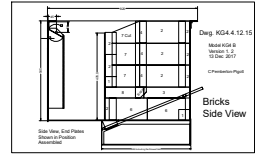
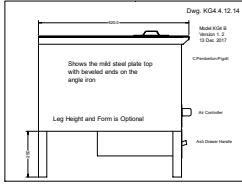
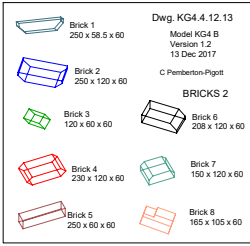
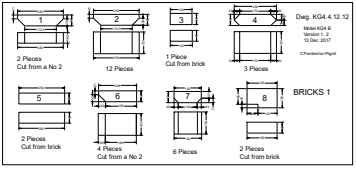
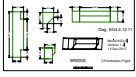
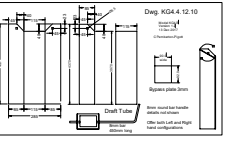
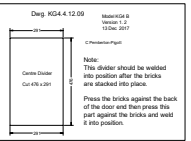
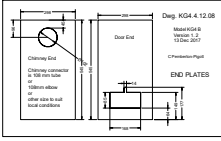
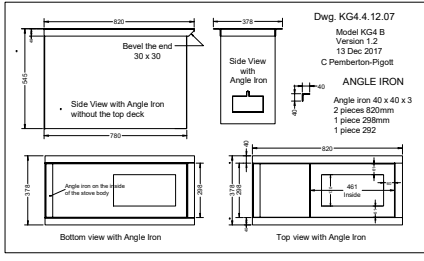
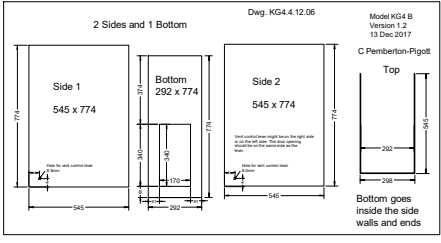
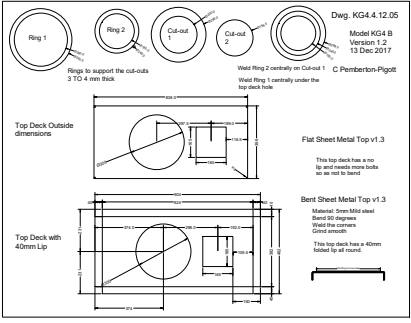
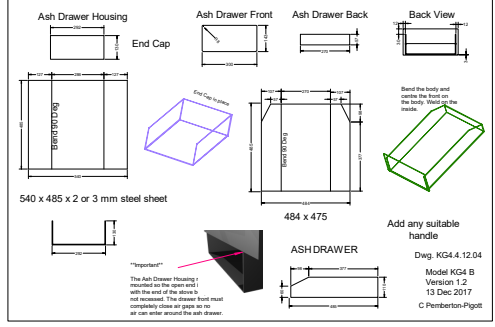
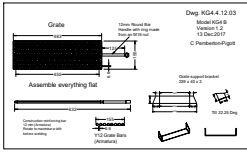
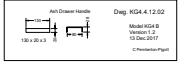
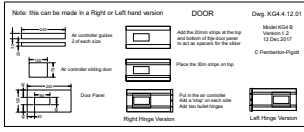
Oташ Абад
Оташ Абад
Fire Forever

Dwg. KG4.4.12.00
 Model KG4.4B
 Version 1.2
 250mm bricks
 13 Dec 2017

C Pemberton-Pigott
 Flat steel top
 Bent steel top with to
 Cast iron top with lip

Materials:
 3.0 mm Mild Steel Sheet
 High density, high temperature firebricks
 Brick size 250 x 120 x 60

Instructions:
 Inside bends are sharp
 Chimney connector is for a 108mm or 133mm chimney with the top
 edge kept at the position indicated
 End plates are placed ON the ends, not inside the ends
 The leg height is to suit local customer preferences
 The bricks are placed in loose for service by the customer
 Door hinges: 2x12mm bullet hinges welded on the right side
 Door latches are left to local preference.
 Both doors must seal all round – air tight if possible.
 There is a high temperature rope seal placed on top of the
 bricks forming the fuel hopper so no air can enter or exit the hopper.



CAST IRON DRAWINGS

